

PHIFER

EXTERIOR SUN CONTROL
FABRIC

SUNTEX® 95/97

WEAVING
EXCELLENCE
WITH
INNOVATION



SunTex® 95/97

BY PHIFER

SOLAR OPTICAL PROPERTIES					SHGC/G VALUE g-tot (glass & blind)					
Color	TS	RS	AS	TV	SINGLE			INSULATING		
					1/8 CL	1/4 CL	1/4 HA	1/2 CL	1 CL	1 HA

SUNTEX® 95 Zero Degree Profile Angle • Fabrics Installed Externally

Carbon	6	10	84	10	0.14	0.14	0.13	0.10	0.10	0.10
Stucco	14	48	38	13	0.16	0.16	0.15	0.14	0.14	0.12
White	17	70	13	16	0.17	0.17	0.16	0.15	0.14	0.12
White/Grey	12	54	34	12	0.14	0.14	0.13	0.12	0.12	0.10
Sand	12	44	44	7	0.15	0.15	0.14	0.13	0.12	0.11
Alpaca	11	39	50	11	0.15	0.15	0.14	0.12	0.12	0.10
Chestnut	11	39	50	9	0.15	0.15	0.14	0.12	0.12	0.11
Mocha	8	22	70	9	0.40	0.14	0.11	0.11	0.11	0.10
Dark Bronze	8	5	87	11	0.16	0.16	0.16	0.12	0.12	0.11
Black	7	3	90	10	0.16	0.16	0.15	0.12	0.12	0.11

SUNTEX® 97 Zero Degree Profile Angle • Fabrics Installed Externally

Carbon	4	11	85	4	0.12	0.12	0.12	0.09	0.09	0.08
Stucco	10	50	40	6	0.13	0.13	0.12	0.11	0.11	0.09
White	15	76	9	12	0.15	0.15	0.14	0.13	0.13	0.10
White/Grey	9	51	40	7	0.12	0.12	0.11	0.10	0.10	0.09
Sand	9	46	45	5	0.13	0.13	0.12	0.10	0.10	0.09
Alpaca	9	44	47	4	0.13	0.13	0.12	0.11	0.10	0.09
Chestnut	7	37	56	4	0.12	0.12	0.11	0.10	0.09	0.09
Mocha	4	22	74	3	0.11	0.11	0.11	0.08	0.08	0.08
Dark Bronze	3	5	92	3	0.12	0.12	0.12	0.09	0.09	0.08
Black	3	4	93	3	0.12	0.12	0.12	0.09	0.09	0.09

PROTECTION THAT LIVES ON
MICROBAN®
 Microban® antimicrobial protection inhibits the growth of stain-causing bacteria, mold and mildew on the shade.



MIF SEAL OF APPROVAL



TS = Solar Transmittance
 RS = Solar Reflectance
 AS = Solar Absorptance
 TV = Visual Transmittance

SHGC = Solar Heat Gain Coefficient

1/8 CL = 1/8" Clear Glass
 1/4 CL = 1/4" Clear Glass
 1/4 HA = 1/4" Heat Absorbing Glass
 1/2 CL = 1/2" Insulating Clear Glass
 1 CL = 1" Insulating Clear Glass
 1 HA = 1" Insulating Heat Absorbing Glass

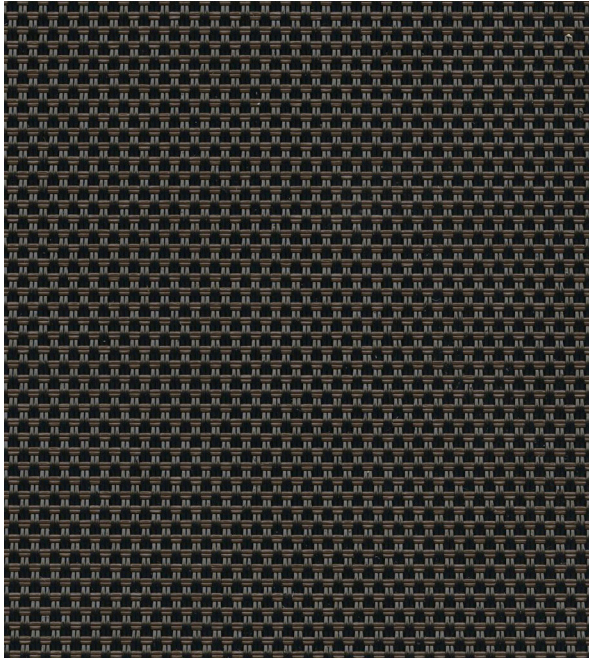
The solar optical properties are used to calculate the solar heat gain coefficient (SHGC). The SHGC represents the percentage of solar heat gain that is transmitted to the interior through the glass and shading system. Dark colors provide maximum glare reduction and visibility.

For additional performance values, test references and technical definitions visit us at phifer.com.

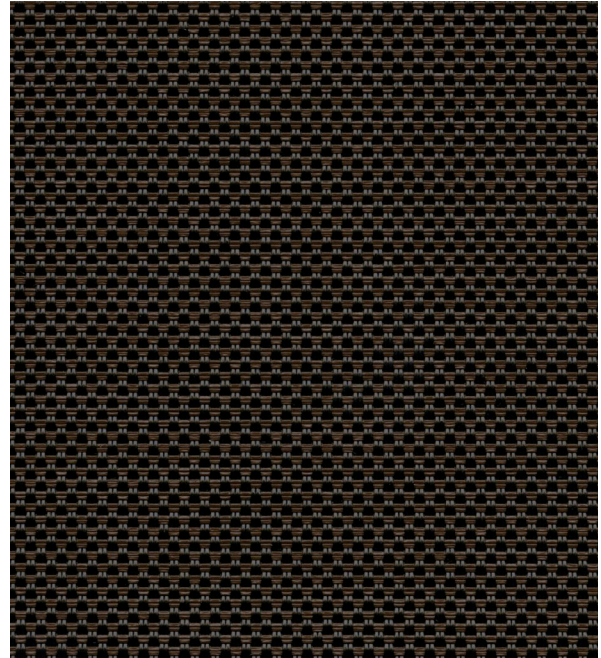
SUNTEX 95

SUNTEX 97

Dark Bronze

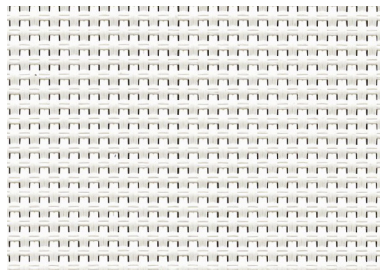


Dark Bronze

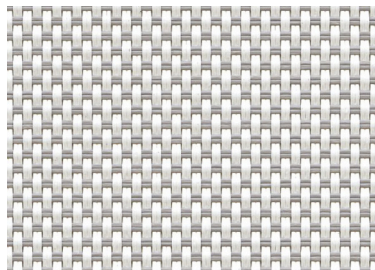


SUNTEX 95 and SUNTEX 97 are also available in the colors shown below.

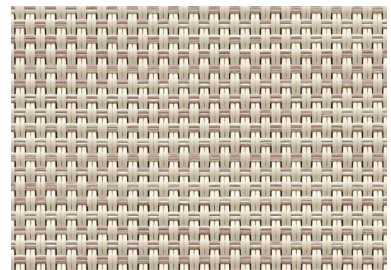
White



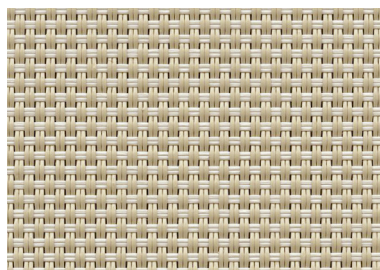
White/Grey



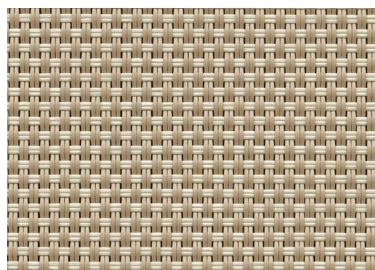
Stucco



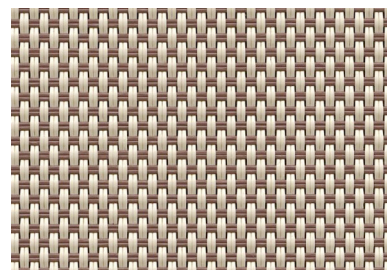
Sand



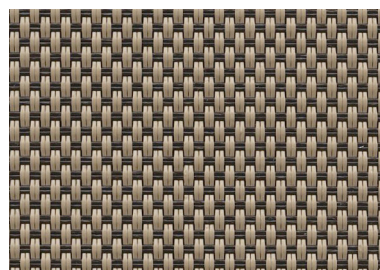
Alpaca



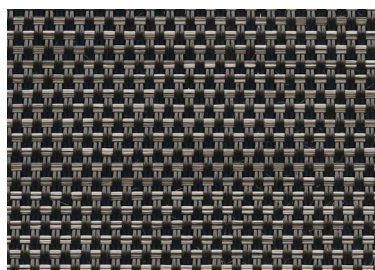
Chestnut



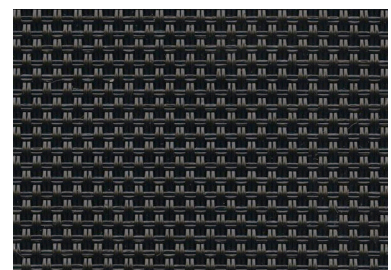
Mocha



Carbon



Black



*Colors may vary based on individual computer settings and should only be used for general reference.

SUNTEX 95/97 SPECIFICATIONS

SunTex 95/97, engineered for exterior roller shade applications, is a full basketweave vinyl-coated polyester fabric that is thinner and lighter weight than traditional SunTex. SunTex 95/97 also offers increased heat and glare control as well as daytime privacy.

FIRE CLASSIFICATION	California Technical Bulletin 117 IBC Section 803.1.1 (Class A Rating)	NFPA 101 (Class A Rating)
BACTERIA AND FUNGAL RESISTANCE	ASTM E 2180 Includes Microban antimicrobial additives	ASTM G21
ENVIRONMENTAL CERTIFICATION	GREENGUARD Certified to these standards for low chemical emissions into indoor air during product usage	GREENGUARD Gold
SAFE USE	RoHS/Directive 2002/95/EC ANSI/WCMA A 100.1-2007 for lead content US Consumer Product Safety Commission Section 101 REACH (EC 1907/2006) compliant	
WARRANTY	10-year exterior	
UV PROTECTION	Seal of Approval by the Melanoma International Foundation (MIF) for effectiveness in preventing sun damage to the skin or eyes	

SUNTEX	95	97 <small>NEW</small>
WIDTHS	126" 320 cm	126" 320 cm
ROLL LENGTH	90 Linear Feet 27.43 Linear Meters	90 Linear Feet 27.43 Linear Meters
COMPOSITION	28% Polyester, 72% Vinyl on Polyester	28% Polyester, 72% Vinyl on Polyester
MESH WEIGHT	15.1 oz/yd ² 511.98 g/m ²	16.0 oz/yd ² 542.49 g/m ²
FABRIC THICKNESS	0.029 in 0.737 mm	0.033 in 0.838 mm
OPENNESS FACTOR	Approximately 5%	Approximately 3%
UV BLOCKAGE	Approximately 95%	Approximately 97%
BREAKING STRENGTH (LBS)	350 Warp, 235 Fill	350 Warp, 298 Fill
STIFFNESS (MG)	524 Warp, 386 Fill	535 Warp, 433 Fill



P. O. Box 1700 • Tuscaloosa, Alabama 35403 -1700 USA
 Phone: 205.345.2120 • FAX: 205.391.0799
 Toll Free USA/Canada: 1.800.221.5497
 phifer.com • ISO Registered



© SunTex is a registered trademark of PHIFER INCORPORATED.
 © MICROBAN is a registered trademark of Microban Products Company.
 ™ UL, the UL logos and the UL mark are trademarks of UL LLC.
 © PHIFER INCORPORATED V20-040720 3030867