

Installation Instructions

Dual XD FlexShade Bracket—by Draper

⚠ Caution

- ① Inspect all boxes to make sure you have received the proper shades and parts.
- ② Open cartons lengthwise.
- ③ If shades are to be installed in areas accessible to young children, be certain to use cord tension device and heed warning below.
- ④ It is the installer's responsibility to make sure appropriate fasteners are used for mounting surface.
- ⑤ All endcaps, fascia, and other hardware must be installed level. Shades must be level and square.
- ⑥ **Please read the following installation guidelines thoroughly and follow them carefully. Failure to do so may cause product to fall or otherwise fail, and invalidates warranty.**

Mounting Endcaps

- ① Attach Bracket Covers to the Dual FlexShade Bracket using included hardware (see Fig. 1).

Product configuration may differ from examples used in diagrams.

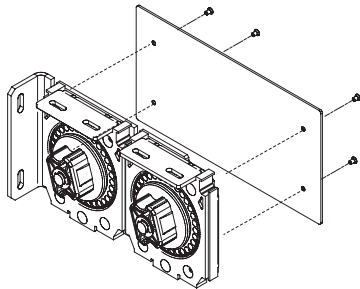


Figure 1

Please Note: Top of the Bracket Cover Plate will be flush with the top of the Bracket Assembly when correctly assembled (see Fig. 2). This distance will be approximately $\frac{1}{16}$ " when the Bracket Cover is mounted upside-down. If assembled incorrectly, the Bracket Cover will extend below the bottom of the Fascia, and will expose the top of the Bracket Assembly.

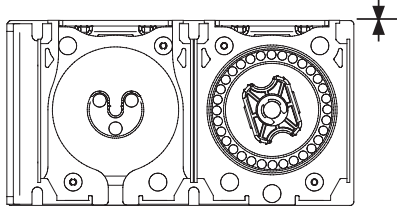


Figure 2

Product configuration may differ from examples used in diagrams.

- ② Mark wall, jamb or ceiling for placement of mounting brackets.
- ⚠ **Caution: Before mounting shades, verify measurements on the card provided with the shade, and ensure the endcaps are installed at the correct width.**
- ③ Drill small starter holes (if necessary) in mounting surface.
- ④ Mount brackets using appropriate fasteners for surface (see Fig. 3). **The installer is responsible for selecting mounting hardware appropriate for site conditions.**

Product configuration may differ from examples used in diagrams.

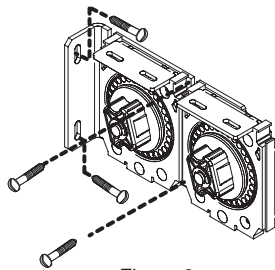


Figure 3

⚠ Warning For the Safety of Young Children



Young children can STRANGLE in cord and bead chain loops. They can also wrap cords around their necks and STRANGLE.

- Always keep cords and bead chains out of children's reach.
- Move cribs, playpens, and other furniture away from cords and bead chains. Children can climb furniture to get to cords.
- Attach tension device to wall or floor. This can prevent children from pulling cords and bead chains around their necks. Fasteners provided with the tension device may not be appropriate for all mounting surfaces. Use appropriate anchors for the mounting surface conditions (see instructions on page 2).

- ⑤ Carefully work the operator (open) end of the rear shade roller onto the rear bead chain clutch (see Fig. 4). Then, following the dashed line in Fig. 4, slide the idler end pin up through the slot on the bottom of the idler end clutch/bracket, around and into the seat for the pin (see Fig. 4).
- ⑥ Repeat with front shade.

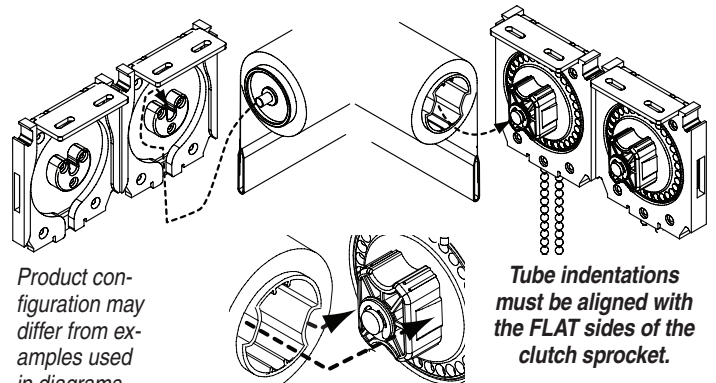


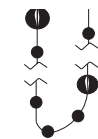
Figure 4

Product configuration may differ from examples used in diagrams.

Tube indentations must be aligned with the FLAT sides of the clutch sprocket.

- ⑦ Set upper and lower travel limits by installing stop balls to bead chain (crimp closed using pliers) (see Fig. 5).
- ⚠ **CAUTION: Do not allow the shade roller to become exposed by running the shade fabric too far down. Be sure to use the stop balls provided in hardware packet by Draper to set the up and down travel limits. Stop balls by others may be too small, and become lodged in the clutch mechanism.**

Please Note: If shade fabric is uneven, see "Field Adjustments."



Stop Balls
Figure 5

DRAPER®

411 S. Pearl St., Spiceland, IN 47385 USA ■ 765-987-7999
www.draperinc.com ■ fax 765-987-7142
Copyright © 2013 Draper Inc. Form DualXDBracket_Inst13 Printed in U.S.A.

Continued

If you encounter any difficulties installing or servicing your Fascia for Dual XD FlexShade Bracket, call your dealer or Draper, Inc., Spiceland, Ind., (765) 987-7999 or fax (765) 987-7142.

P-Clip Cord Tension Device

- ① Draper Bead Chain Clutch Operated shades that do not comply with WMCA/ANSI Standard A100.1-2012 come with a cord tension device pre-attached to bead chain (see Fig. 6). To use this P Clip, thread bead chain through the clip, then attach to wall, jamb or sill so that the bead chain is held taut enough that children cannot pull it away from the wall or fit their head into the loop. **See safety note on page 1.**



Figure 6

Spring-Loaded Cord Tension Device

- If your Draper Clutch FlexShade complies with WMCA/ANSI Standard A100.1-2012**, a Spring-Loaded Cord tension device comes installed on bead chain (see Fig. 7). An approved permanent warning label is attached, and approved mechanical fasteners (wood screws) are included. Install cord tension device to wall, jamb or sill. To install, pull tensioner down so that the bead chain is held taut and use the mounting hardware to keep it taut. The bead chain should be taut enough so it will move smoothly through the device. If there is not enough tension, the device will not allow the bead chain to pass through and operate the shade. This device is designed so that children cannot pull the bead chain away from the wall or fit their head into the loop. **See safety note on page 1. The installer is responsible for selecting mounting hardware appropriate for site conditions.** For more information, visit: <http://www.draperinc.com/WindowShades/WCMACompliance.asp>.

Attaching to Wood or Metal

- ① For attaching to wood, two #8-18 x 1.5" Zinc HWH TEK Type AB wood screws are provided. For attaching to metal, choose fasteners with a minimum fastener manufacturer-rated or tested release force of 20 lb (89 N), and make sure they are long enough for the threads to catch and hold.
- ② Mark mounting hole locations with a pencil.
- ③ Drill pilot holes smaller than the screw size.
- ④ Pass screws through the Spring Loaded Tension Device. Turn the screws into the pilot hole, starting by hand.

Please Note: Tighten screws so that the Spring Loaded Tension Device maintains enough tension on the bead chain for shade to operate without working loose, but not tight enough that the Spring Loaded Tension Device is damaged by overtightened screws.

Installation through Drywall

- ① Make sure that screws are long enough for the threads to catch and hold joist or stud.
- ② Locate the stud and mark it with a pencil.
- ③ Mark mounting hole locations.

Please note: If you are unable to mount on a stud, use Molly Bolts or Toggle Bolts. The fasteners shall have a minimum fastener manufacturer-rated or tested release force of 20 lb (89 N).

- ④ Drill shallow pilot holes smaller than the screw size.
- ⑤ Pass screws through the Spring Loaded Tension Device. Turn the screws into the pilot hole, starting by hand. The fasteners shall have a minimum fastener manufacturer-rated or tested release force of 20 lb (89 N).

Please Note: Tighten screws so that the Spring Loaded Tension Device maintains enough tension on the bead chain for shade to operate without working loose, but not tight enough that the Spring Loaded Tension Device is damaged by overtightened screws.

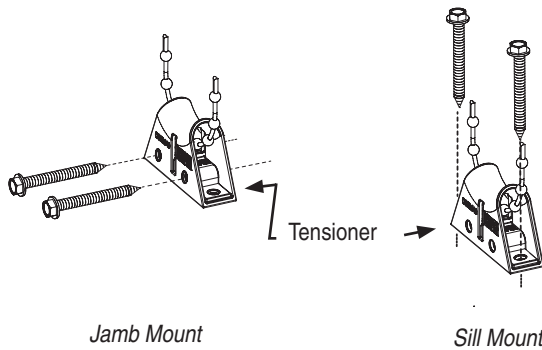
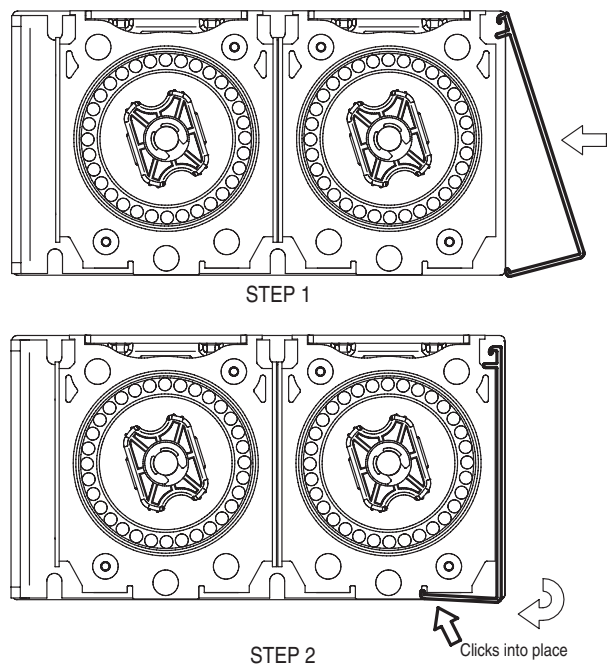


Figure 7

Attaching Fascia

- ① Place groove along top of fascia over endcaps, and snap into place (see Fig. 8). **Fascia is not fully seated until it clicks into place on both ends. Once in place, check for secure fit.**



Product configuration may differ from examples used in diagrams.

Figure 8

Field Adjustments

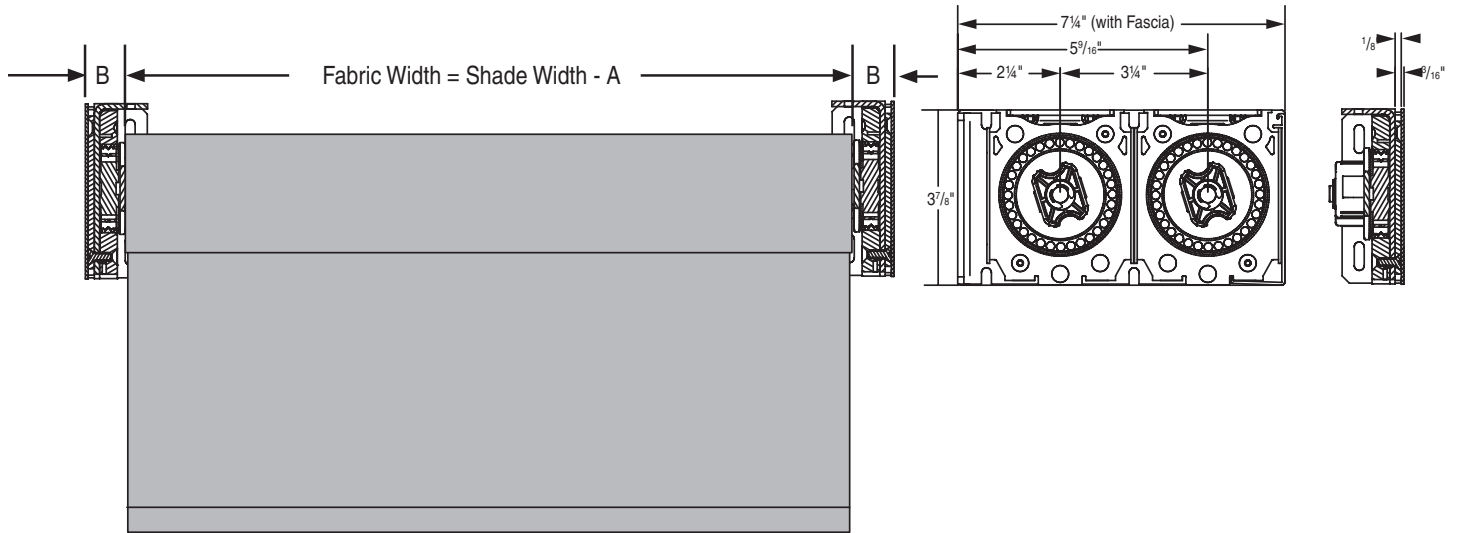
Each Draper Solar Control Shade is tested to ensure proper operation. Even with this testing, some field adjustments may be needed for telescoping. If the shade is telescoping, place a piece of high quality gaffer tape about 1" wide on the exposed roller (where the fabric will cover it) on the side that you want the fabric drawn toward. For example: if the fabric is tracking to the left, place the tape on the right side.

Cleaning and Maintenance

Window covering products manufactured by Draper, when properly installed, should require no operational maintenance or lubrication.

Most of Draper's standard fabrics may be cleaned at the window by vacuuming with a soft brush attachment. They may also be cleaned by using a sponge or soft cloth and mild solution of warm soapy water. A dishwashing liquid, such as Ivory liquid, is recommended. A clean dry cloth is recommended for the metal finish. **Exceptions are Flocké and Roc-Rol fabrics, which must be cleaned with a dry art sponge.**

Dimensions—Dual XD FlexShade Bracket



Fabric Width = Shade Width - A

Product	A	B
1.56" Roller With Bracket Covers	1 7/8"	15/16"
1.56" Roller Without Bracket Covers	1 3/4"	7/8"
2" Roller With Bracket Covers	2"	1"
2" Roller Without Bracket Covers	1 7/8"	15/16"
2" Roller, Spring Assist With Bracket Covers	2"	1"
2" Roller, Spring Assist Without Bracket Covers	1 7/8"	15/16"