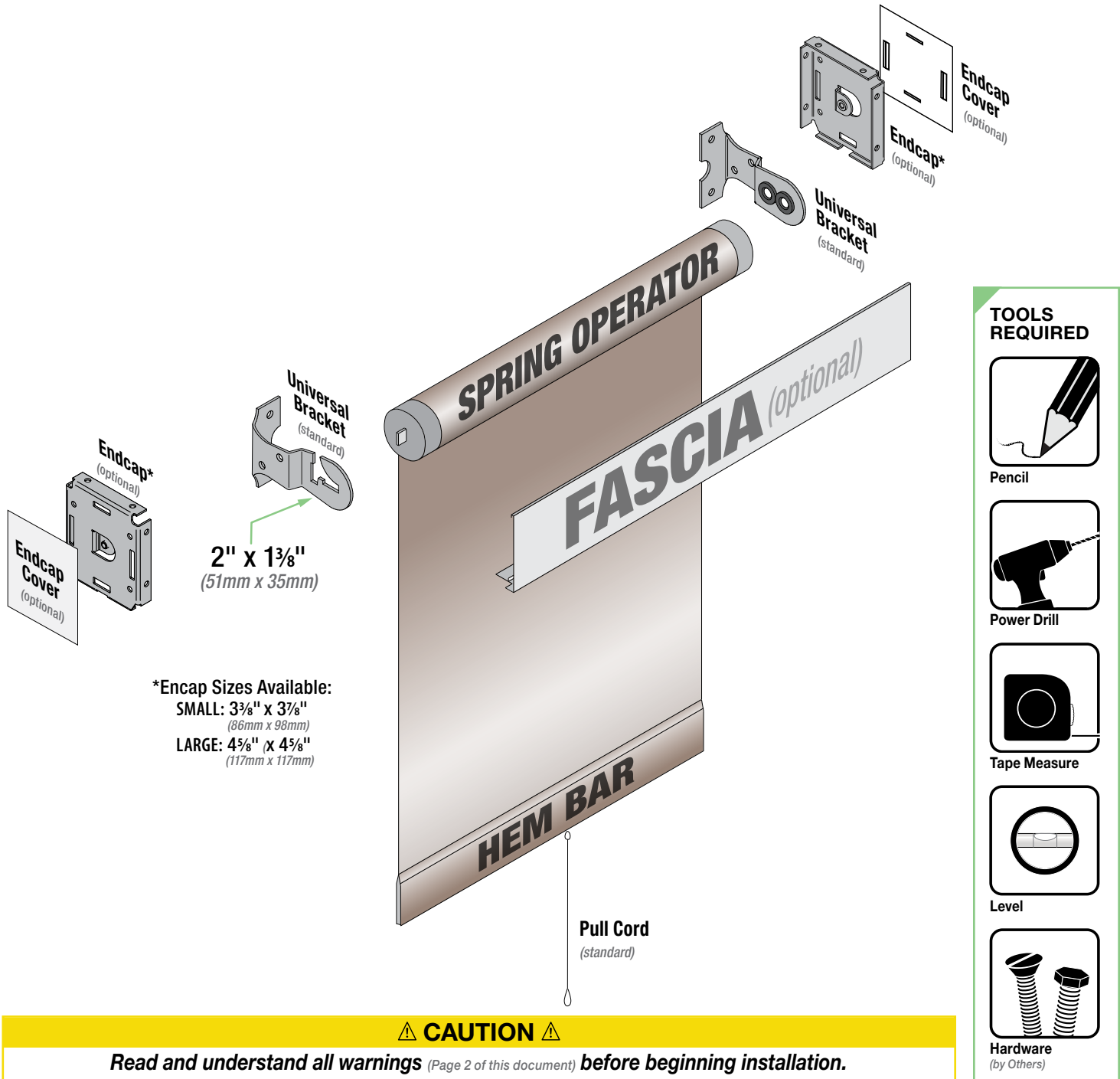


# Spring Roller Shade

Simple design with careful craftsmanship for economical medium duty light control

## INSTRUCTIONS INSTALLATION & OPERATION

### Overview - Components



### Contents

Overview - Components.....1	Section 1 - Mounting .....3
PLEASE READ - Safety Information.....2	Section 2 - Dimensions .....4

## PLEASE READ - Safety Information

### Important Safety Information



## WARNING



### Important Safety Information

**Improper installation and use of the Spring Roller Shade can result in serious injury or death. Primarily, injuries can occur if the unit falls due to imprecise installation, mishandling of the shade during installation or installation on an insufficient wall or ceiling structure. Please use extreme care.**

1. Please read the following installation guidelines thoroughly and follow them carefully. Failure to do so may cause product to fall or otherwise fail, and could result in serious injury.
2. Installation and calibration of the shade should only be performed by an authorized, qualified, and experienced professional.
3. Do not affix the unit to wall or ceilings that have inadequate strength to permanently hold the unit during use. It is the owner's and installer's responsibility to confirm the wall or ceiling to which the unit attaches is sufficient to permanently hold the weight and stress loads of the unit at all times. Draper, Inc., is not responsible for improper installation, application, testing or workmanship related to the product at place of installation.
4. It is the installer's responsibility to make sure appropriate fasteners are used for mounting.
5. All brackets, fascia, headboxes, pockets, wall clips, and other hardware must be installed level. Shade unit must be level and square.
6. Never leave the area while operating the shade during installation, maintenance, or normal operation, unless it is secure and safe.
7. Before testing or operation, carefully inspect the entire area and path of the shade and areas underneath the shade to be sure no persons or objects are in the area.
8. During testing or operation, carefully watch the surrounding area for any potential safety concerns including nearby persons or objects.
9. After installation, the entire system should be carefully tested to ensure safe and normal operation. Extreme care should be taken during testing to remain clear of moving parts to avoid possible injury.
10. Operation of shade should be performed only by authorized and qualified personnel, who have been trained in the safe and effective operation of the shade and understand its safety features.
11. The safety features of the shade should never be disabled, bypassed, or overridden. The system should not be operated until all safety features are properly and completely installed, calibrated, and tested.
12. Shade may need to comply with local, state, or district rules and regulations, in particular when installed in schools. All applicable rules and regulations should be reviewed before installation and use.
13. Failure to precisely follow installation guidelines invalidates all warranties.
14. Custom products/installations may not be reflected in this manual. Call Draper, Inc., if you have questions regarding your installation.

### Before Beginning Installation

1. Look for any job site conditions that could interfere with installation or operation of the system.
2. Read carefully and be sure to understand all installation instructions and all related operations manuals. These instructions are intended to serve as a guide for the installer and owner. They should be followed closely and combined with the expertise of experienced qualified installers. Draper, Inc., is not responsible for improper installation, application, testing, or workmanship related to the product at place of installation. Please retain all instructions for future use.
3. Open cartons lengthwise.
4. Locate and lay out all pieces.
5. Inspect all boxes to make sure you have received the proper shade and parts. Controls may be shipped separately, or in same carton as shade.
6. If you have any difficulties with installing, servicing, or operating your shade, call your dealer or Draper, Inc., 765-987-7999.

### Field Adjustments

Each Draper Solar Control Shade is tested to ensure proper operation. Even with this testing, some field adjustments may be needed for telescoping.

If the shade is telescoping, place a piece of high quality gaffer tape about 1" (25 mm) wide on the exposed roller (where the fabric will cover it) on the side that the fabric will be drawn toward. For example: if the fabric is tracking to the left, place the tape on the right side.

Roller loose in brackets:

If shade roller is loose in brackets (roller should have about  $\frac{1}{8}$ " [3 mm] end play) and doesn't readily roll up shade, unroll shade and remove from brackets. Re-roll the cloth by hand and replace it in brackets.

Roller too tight:

If shade roller is wound too tight, shade will not fully or freely unroll. Remove rolled up shade from brackets, partially unroll cloth by hand, and replace in brackets.

### Spring Tensioning Instructions

1. Clamp the flat spear on the left end of the roller securely (a pair of vise-grip locking pliers works well) and rotate clockwise 15 turns. Take care not to allow the pliers to slip as tension increases.
2. Once the desired amount of rotations have been added, stop the rotation of the slotted end in a vertical position. The vertical position must be maintained to lock the mechanism.
3. Release a small amount of pressure off the roller and allow it to rotate very slowly (less than 180 degrees of rotation will be necessary). This will allow the spring mechanism to lock into position.

### Cleaning and Maintenance

Window covering products manufactured by Draper, when properly installed, should require no operational maintenance or lubrication.

Most of Draper's standard fabrics may be cleaned at the window by vacuuming with a soft brush attachment. They also may be cleaned by using a sponge or soft cloth and mild solution of warm soapy water. A mild dishwashing liquid is recommended. A clean dry cloth is recommended for the metal finish.

**Please Note:** Exceptions are Flocké and Phifer SW7000 fabrics, which must be cleaned with a dry art sponge.

## Section 1 - Mounting

**⚠ Caution:** Before mounting shades, verify measurements on label provided with shade, and ensure unit is installed at correct width.

**Please Note:** Installer is responsible for selecting mounting hardware appropriate for site conditions.

1. Open carton along length, not at end. DO NOT use a knife to open.
2. Each shade is tagged with the size. If fascia is included, each piece is marked.
3. Install all Draper window shades level. Check with carpenter's level.
4. Left and right brackets are different; be sure you are installing the proper brackets in the proper opening.

**Please read the following installation guidelines thoroughly and follow them carefully. Failure to do so may cause product to fall or otherwise fail, and invalidates warranty.**

**⚠ Caution:** Before mounting shades, verify measurements on the card provided with the shade, and ensure the brackets are installed at the correct width.

### Section 1.1 - Mounting with Brackets

1. Mount brackets according to type of installation. Use appropriate fasteners (two per bracket) for wall, jamb or ceiling (see Fig. 1). The installer is responsible for selecting mounting hardware appropriate for site conditions.
2. Insert idler end into right bracket (see Fig. 2).
3. Lower spear on left end of roller into left bracket and rotate into locked position (see Fig. 3). Note: The notch on the spring roller should be positioned down. The spring has been pre-tensioned in the factory.

#### WITH BRACKET MOUNT

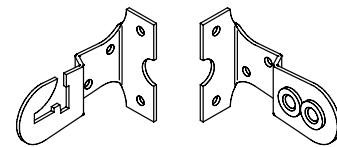


Figure 1

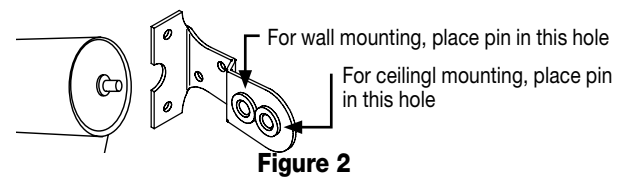


Figure 2

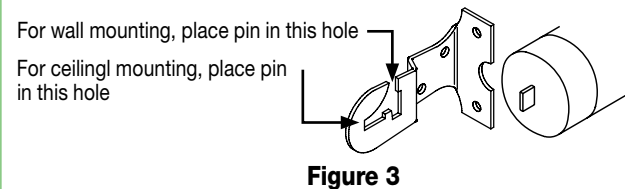


Figure 3

### Section 1.2 - Mounting with Endcaps

1. For installations with fascia, mount endcaps according to type of installation. Use appropriate fasteners for wall, jamb, or ceiling (see Fig. 4).

**The installer is responsible for selecting mounting hardware appropriate for site conditions. Snap end covers onto endcaps.**

2. Insert idler end into right endcap.
3. Lower spear onto left endcap and rotate into locked position.
4. Place fascia top lip over top edge of endcaps, then rotate down and snap into place (see Fig. 5). NOTE: Make sure shade fabric does not retract completely behind fascia.

**⚠ Caution:** Fascia is not fully seated until it clicks into place on both ends. Once in place, check for secure fit. If not secure, secure with appropriate fastener (not included).

**Please Note:** Small hardware shown. Large hardware will look slightly different, but install and operate the same way.

#### WITH ENDCAP MOUNT

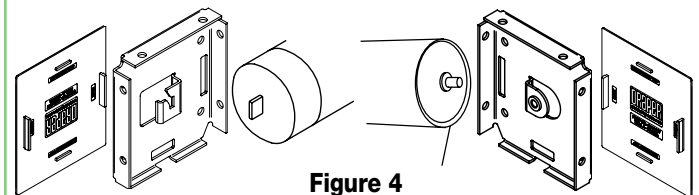


Figure 4

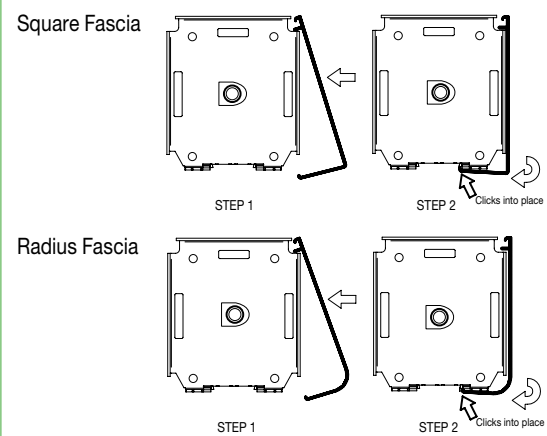


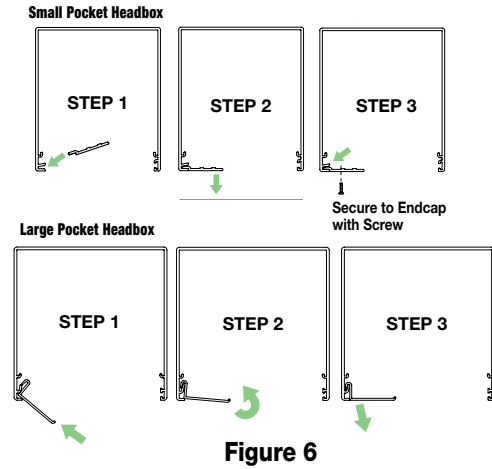
Figure 5

## Section 1.3 - Mounting with Headbox

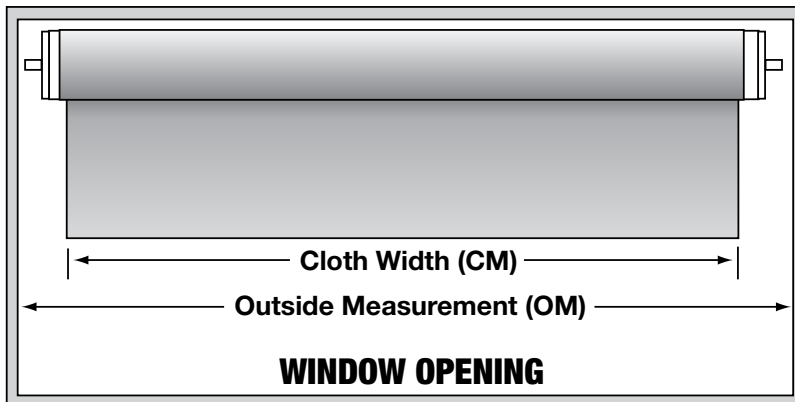
1. Snap endcap covers onto endcaps.
2. Place endcaps into back/top portion of wall/ceiling headbox or into pocket extrusion of pocket headbox. Using pre-drilled holes in endcaps, mark the headbox for drilling.
3. Drill holes in back or top, depending on whether you will be mounting the headbox to the wall, ceiling or pocket.
4. Attach endcaps and wall/ceiling headbox back/top or pocket headbox extrusion to wall, ceiling or pocket using mounting hardware appropriate for site conditions.
5. Install shade (see "With Endcaps" section above).
6. Attach headbox fascia or pocket closure (see Fig. 6 for pocket closure). Surface Headbox fascia is not fully seated until it clicks into place on both ends. Once in place, check for secure fit. If not secure, secure with appropriate fastener (not included).

**Note on pocket style headbox, small size will require securing closure panel to endcap with provided screw.**

## ATTACHING CLOSURE PANEL

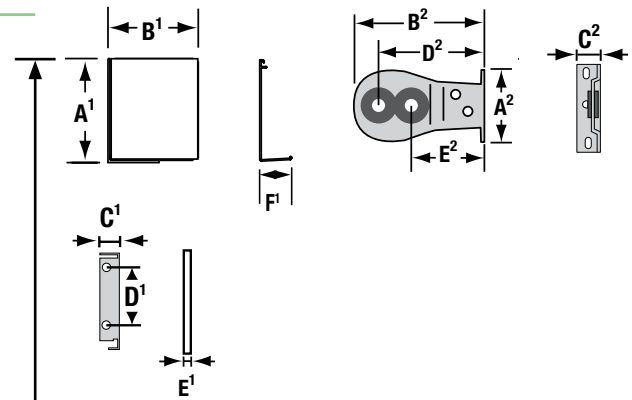


## Section 2 - Dimensions



(IM) = Outside Measurement (OM) with 1/8" (3 mm) deduction.

Overall Width includes plastic endcap covers. (Pair adds 1/8" [3 mm] to Overall Width)



**Please note:** When measuring shade height, remember to include endcaps and fascia or headbox.

HEADBOX WITH ENDCAPS				
	SMALL		LARGE	
A <sup>1</sup>	3 15/16"	100mm	4 11/16"	119mm
B <sup>1</sup>	3 7/16"	87mm	4 11/16"	119mm
C <sup>1</sup>	5/8"	16mm	5/8"	16mm
D <sup>1</sup>	2"	51mm	3 1/4"	83mm
E <sup>1</sup>	1/16"	1.6mm	3/32"	2.4mm
F <sup>1</sup>	1 3/16"	30mm	1 1/16"	40mm

ENDCAPS WITH FASCIA				
	SMALL		LARGE	
A <sup>1</sup>	3 7/8"	98mm	4 5/8"	117mm
B <sup>1</sup>	3 3/8"	86mm	4 5/8"	117mm
C <sup>1</sup>	5/8"	16mm	5/8"	16mm
D <sup>1</sup>	2"	51mm	3 1/4"	83mm
E <sup>1</sup>	1/16"	1.6mm	3/32"	2.4mm
F <sup>1</sup>	1 3/16"	30mm	1 1/16"	40mm

BRACKETS				
	SMALL		LARGE	
A <sup>2</sup>	2 3/16"	56mm	2 3/16"	56mm
B <sup>2</sup>	2 3/8"	60mm	3"	76mm
C <sup>2</sup>	1 1/16"	27mm	1 1/16"	27mm
D <sup>2</sup>	1 5/8"	41mm	2 1/4"	57mm
E <sup>2</sup>	1 1/4"	32mm	1 3/4"	44mm
F <sup>2</sup>	NA	NA	NA	NA

Shade Overall Width includes plastic endcap covers.  
 Pair of small endcap covers adds 1/8" (3.2mm) to Overall Width.  
 Pair of large endcap covers adds 3/16" (4.8mm) to Overall Width.  
 Above dimensions based upon 20 lb clutch and 1 1/2" (38mm) diameter roller.

**Please Note:** When mounting brackets to the wall, use the hole closest to the wall. When mounting brackets to the ceiling, use the hole furthest away from the ceiling.