



Acumen™ – A Smart Choice

Elegant Screens for All Settings



Designed with maximum flexibility in mind, the new Acumen™ series of surface mounted projection screens is a smart choice. This series addresses varying surrounding environment conditions and complements any room design.

An elegant, extruded aluminum housing with an attractive finish adds polish to this below-ceiling screen so Acumen looks great even when not in use.

Floating mounting brackets and removable fascia allow for easy installation and maintenance. No wiring necessary with battery-operated options that further reduce installation costs.

Confident in the quality of the Acumen, Draper® stands behind it with an extended 7-year warranty.

CORE SOLUTION



FOCUSED ON INNOVATIVE SOLUTIONS

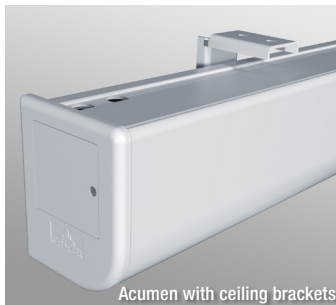
- Sizes up to 18' wide.
- Available with a variety of motors, including quiet and low voltage options.
- Optional rechargeable battery motor in sizes to 10' wide.
- Also available as a manual screen.
- Extruded aluminum housing with white powder coated or optional black finish.
- Removable fascia, floating mounting brackets, and ceiling suspension brackets allow for easy installation and serviceability.
- Extended 7-year warranty.
- Available in a broad line of Draper screen materials including TecVision®.
- Acumen E or V and Acumen XL E or V ship standard with built-in LVC – IV.
- Patent Pending.

ACUMEN FAMILY OF PROJECTOR SCREENS

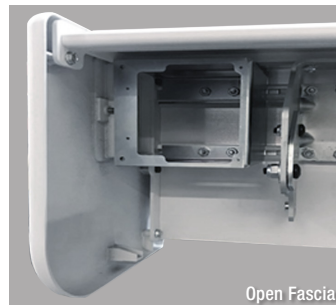
- **Acumen V:** Electric screen with tab-tensioned viewing surfaces, sizes through 10' wide. Standard, quiet, and low-voltage motors are available.
- **Acumen E:** This electric screen matches the Acumen V, but with free-hanging viewing surfaces.
- **Acumen Recharge V:** Brings maximum flexibility to electric projection screens. Rechargeable with no wiring required for power or control, it installs just like a manual screen. All controls are wireless: add an optional hub and it can be controlled with a mobile app, Google Home, or Alexa. Each charge lasts approximately 500 cycles. Sizes through 10' wide, with choice of tab-tensioned viewing surfaces.
- **Acumen Recharge E:** All of the features of the Acumen Recharge V, but with free-hanging viewing surfaces.
- **Acumen XL V:** Like the Acumen V, but in larger sizes and with a larger housing. Tab-tensioned surfaces, in sizes through 18' wide. Standard and low-voltage motors available.
- **Acumen XL E:** Electric screen with free-hanging viewing surfaces, in sizes through 18' wide. Standard and low-voltage motor options.
- **Acumen M:** Manual version of the Acumen, in sizes through 12' wide. Spring-roller operation and free-hanging viewing surfaces.
- Products are available with all Draper free-hanging and tab-tensioned viewing surfaces including the award-winning **TecVision**.



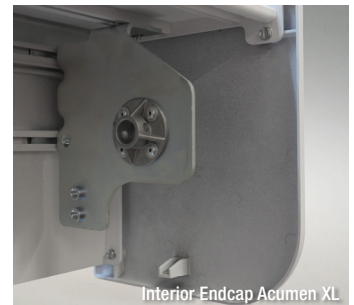
Acumen and Acumen XL



Acumen with ceiling brackets



Open Fascia



Interior Endcap Acumen XL



Acumen M