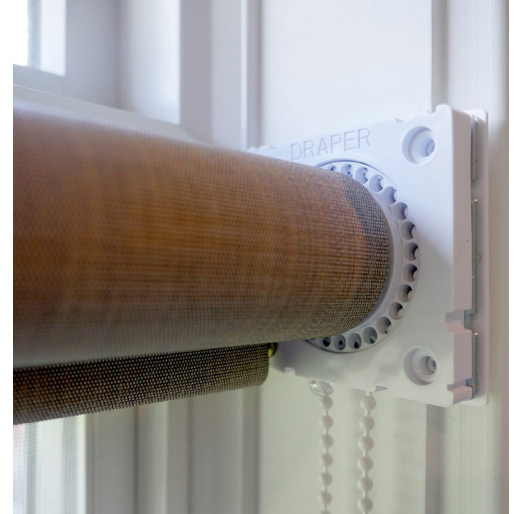
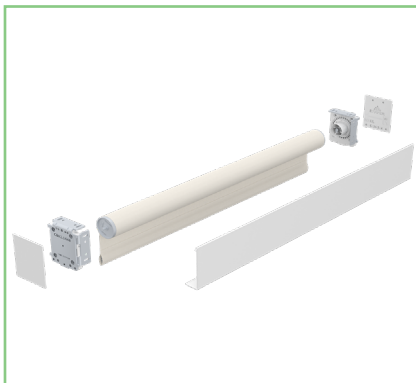


Clutch-Operated FlexShade® **NEXD**





Clutch-Operated FlexShade® NEXD



Clutch-Operated FlexShade® NEXD

Manually-operated window shade.
Wall- or ceiling-mounted.
Flexible installation options.

Pre-drilled jamb mounting holes.

Height-adjustable idler bracket.

Fine leveling adjustments after installation.

Heavy-duty field convertible clutch.

Durable.

Easy to use.

Low maintenance.

Perfect for commercial, healthcare, institutional, or educational settings.

Sizes up to 144" wide.

OPTIONS:

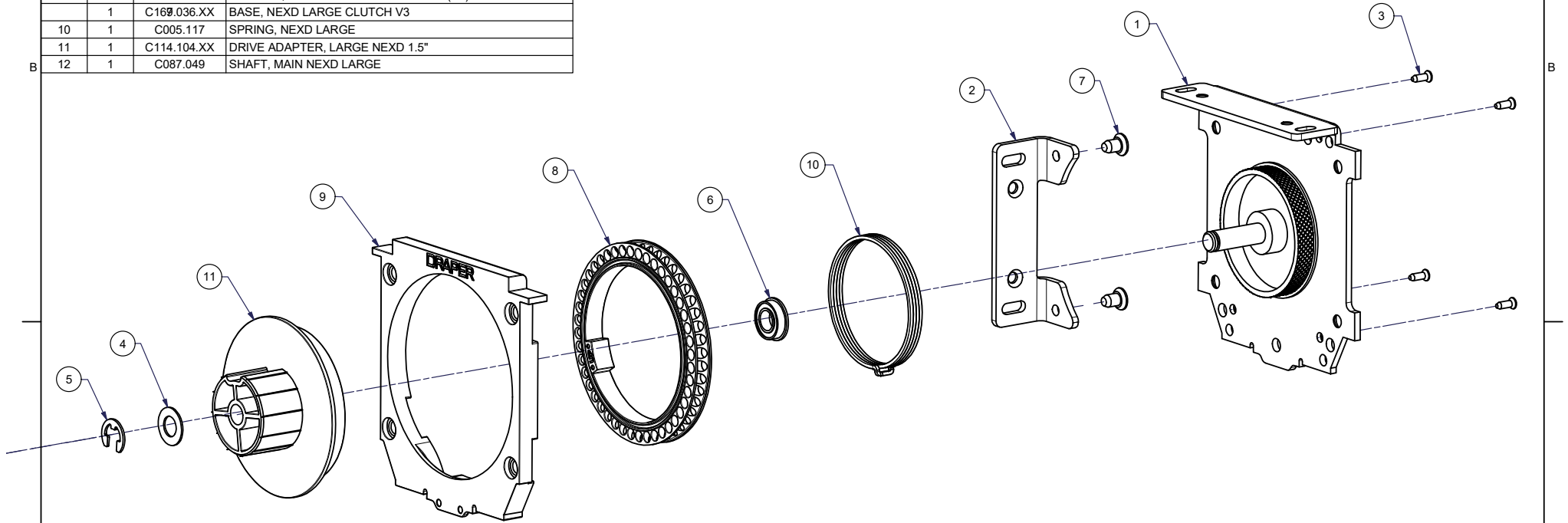
- Slim: Fully assembled cassette-style installation with a 3- $\frac{3}{8}$ " profile.
- Small and large hardware offer traditional shade installation.
- 120 lb. test stainless steel bead chain (standard). Optional polyester chain available in 5 colors.
- Five hembar options: closed pocket (standard), open pocket, exposed round, $\frac{7}{8}$ " or 1- $\frac{1}{2}$ " light sealing.
- Three hardware sizes—slim, small, and large.


INNOVATIONS
IN SOLAR
SHADING

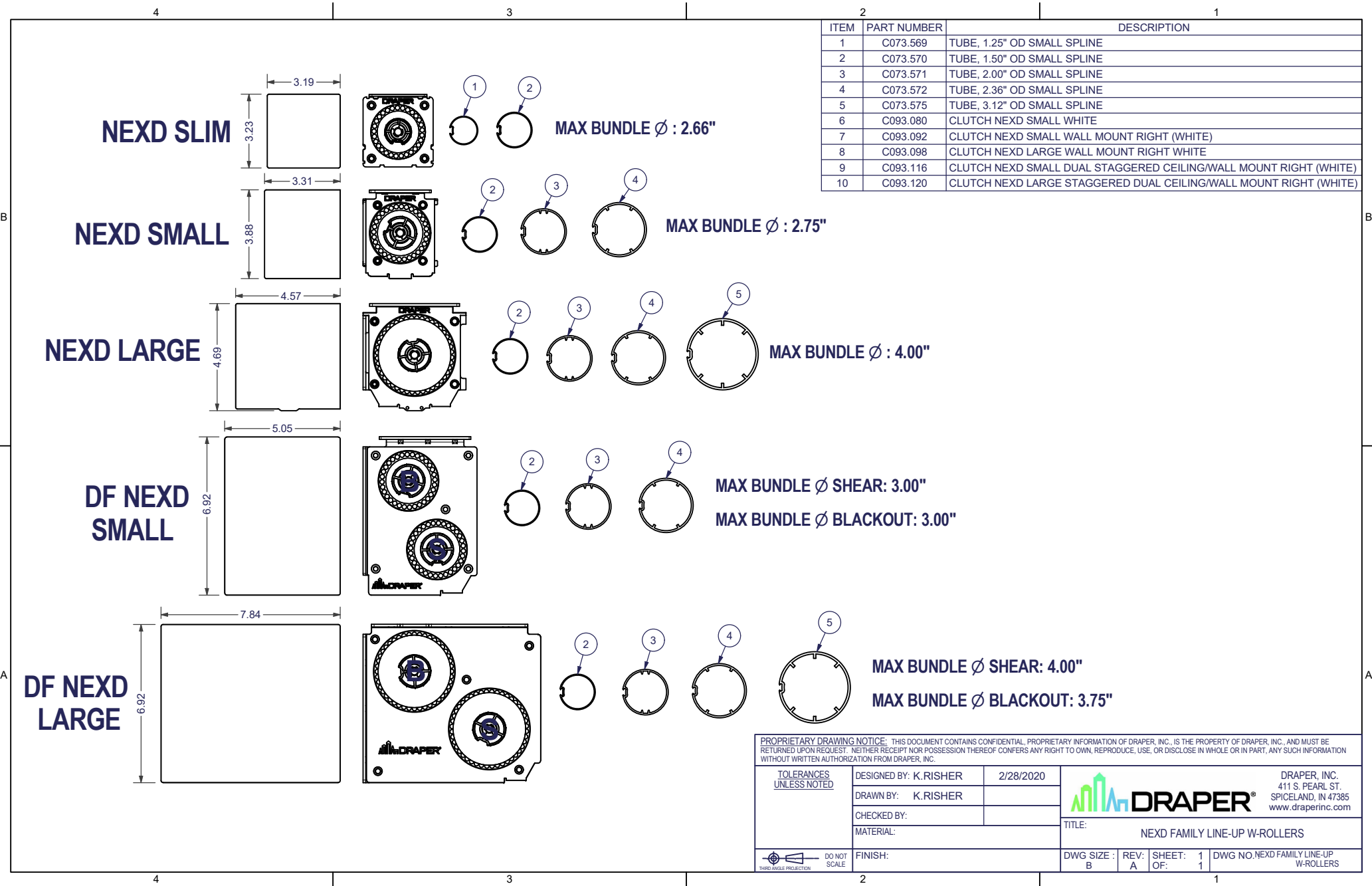


ITEM	QTY	PART NUMBER	DESCRIPTION
	1	C002.1490	BRACKET NEXD LARGE CLUTCH
	1	C002.1492	BRACKET NEXD LARGE WALL MOUNT STANDARD
	4	C020.659	SCREW, 3mm x 9mmL UPFH (BRIGHT ZINC)
	1	C031.178	WASHER THRUST 9.25mm ID x 17mm OD x .5mm THK.
	1	C034.105	CLIP E 7.10mm ID x 15.7mm OD x .960mm THK
	1	C109.064	BEARING 9mm ID x 17mm x 5mm HEIGHT
	2	C020.680	SCREW, #12-24 X 3/8"L PFH (UNDERCUT)
	1	C188.076.XX	CARRIER, CHAINWHEEL NEXD LARGE (V2)
	1	C169.036.XX	BASE, NEXD LARGE CLUTCH V3
10	1	C005.117	SPRING, NEXD LARGE
11	1	C114.104.XX	DRIVE ADAPTER, LARGE NEXD 1.5"
12	1	C087.049	SHAFT, MAIN NEXD LARGE

C093.098 CLUTCH NEXD LARGE WALL MOUNT RIGHT (WHITE)
C093.099 CLUTCH NEXD LARGE WALL MOUNT RIGHT (BLACK)



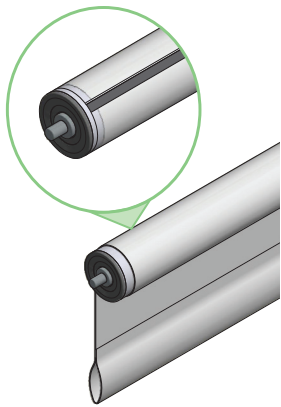
TOLERANCES UNLESS NOTED 2 PLC. DECIMAL: ±.01" 3 PLC. DECIMAL: ±.005" ANGULAR: ±1° FRACTIONAL: ±1/32"	DESIGNED BY: K.RISHER	4/26/2018	 DRAPER DRAPER, INC. 411 S. PEARL ST. SPICELAND, IN 47385 www.draperinc.com
	DRAWN BY: K.RISHER	11/26/2018	
	CHECKED BY:		
	MFG APPD BY:		
PROPRIETARY DRAWING NOTICE: THIS DOCUMENT CONTAINS CONFIDENTIAL, PROPRIETARY INFORMATION OF DRAPER, INC., IS THE PROPERTY OF DRAPER, INC., AND MUST BE RETURNED UPON REQUEST. NEITHER RECEIPT NOR POSSESSION THEREOF CONFERS ANY RIGHT TO OWN, REPRODUCE, USE, OR DISCLOSE IN WHOLE OR IN PART, ANY SUCH INFORMATION WITHOUT WRITTEN AUTHORIZATION FROM DRAPER, INC.	ENG APPD BY:		TITLE: CLUTCH NEXD LARGE WALL MOUNT RIGHT WHITE
			MATERIAL:
			PAPER SIZE: B
			FINISH:
	SCALE:	REV: B	SHEET: 1 OF 1 DWG NO. - PART NO. C093.098



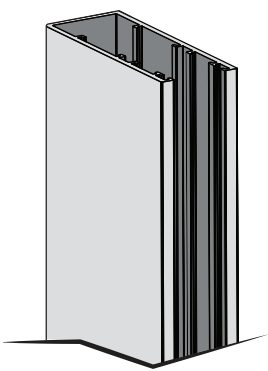
Clutch-Operated FlexShade Slim NEXD

Mounting Hardware Selections

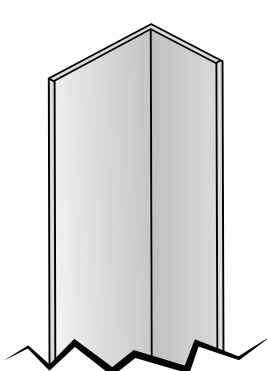
Spline Fabric Attachment



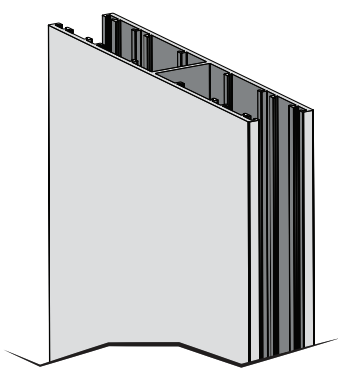
"U" Channel



"L" Angle

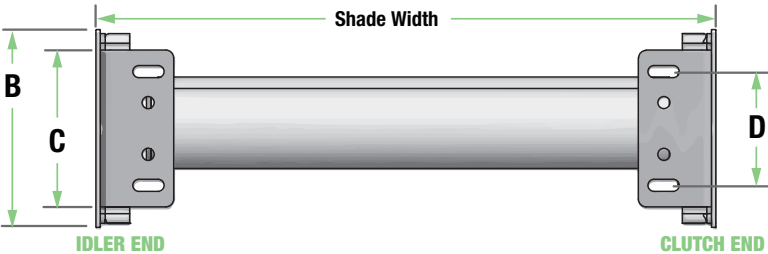


"H" Channel



Clutch-Operated FlexShade NEXD Dimensions:

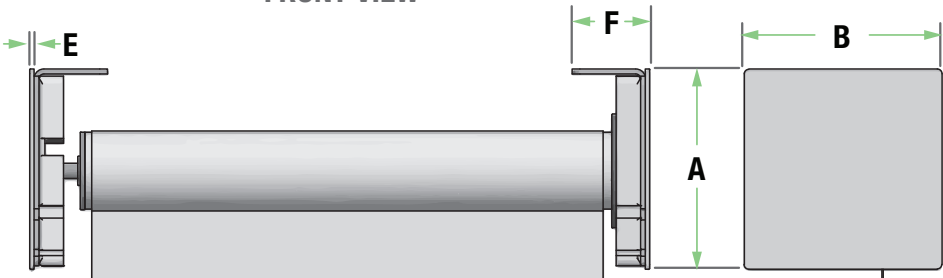
TOP-DOWN VIEW



WALL MOUNT DIMENSIONS	
A	3 3/8" (81 mm)
B	3 1/4" (83 mm)
C	2 1/2" (64 mm)
D	1 3/8" (30 mm)
E	1/8" (1.6 mm)
F	1 1/4" (32 mm)

CEILING MOUNT DIMENSIONS	
A	3 1/4" (83 mm)
B	3 3/8" (81 mm)
C	2 1/2" (64 mm)
D	1 3/8" (30 mm)
E	1/8" (1.6 mm)
F	1 1/4" (32 mm)

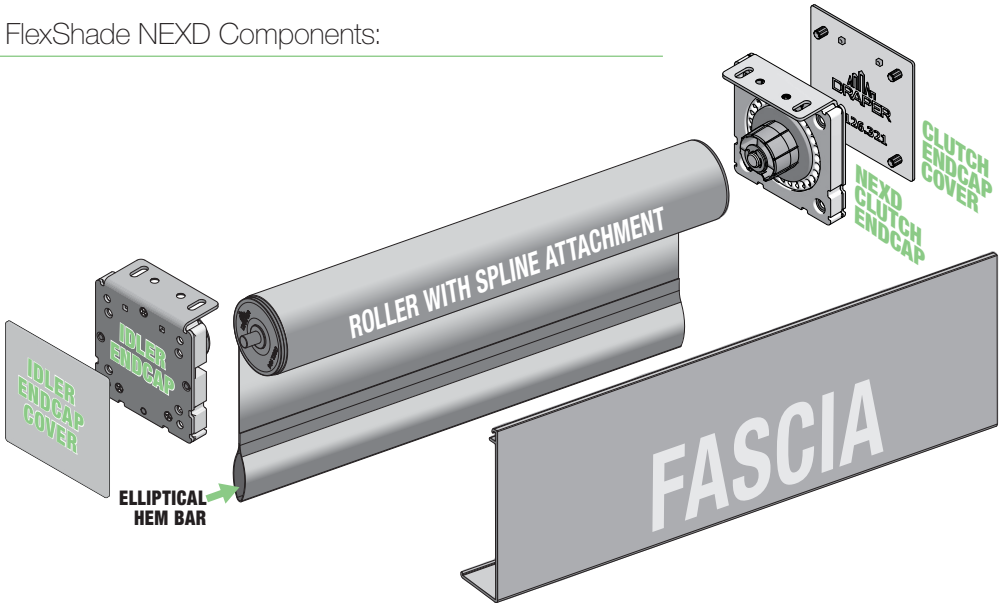
FRONT VIEW



PLEASE NOTE:
Overall Width includes plastic endcap covers, which add 1/8" (3mm) to Overall Width.

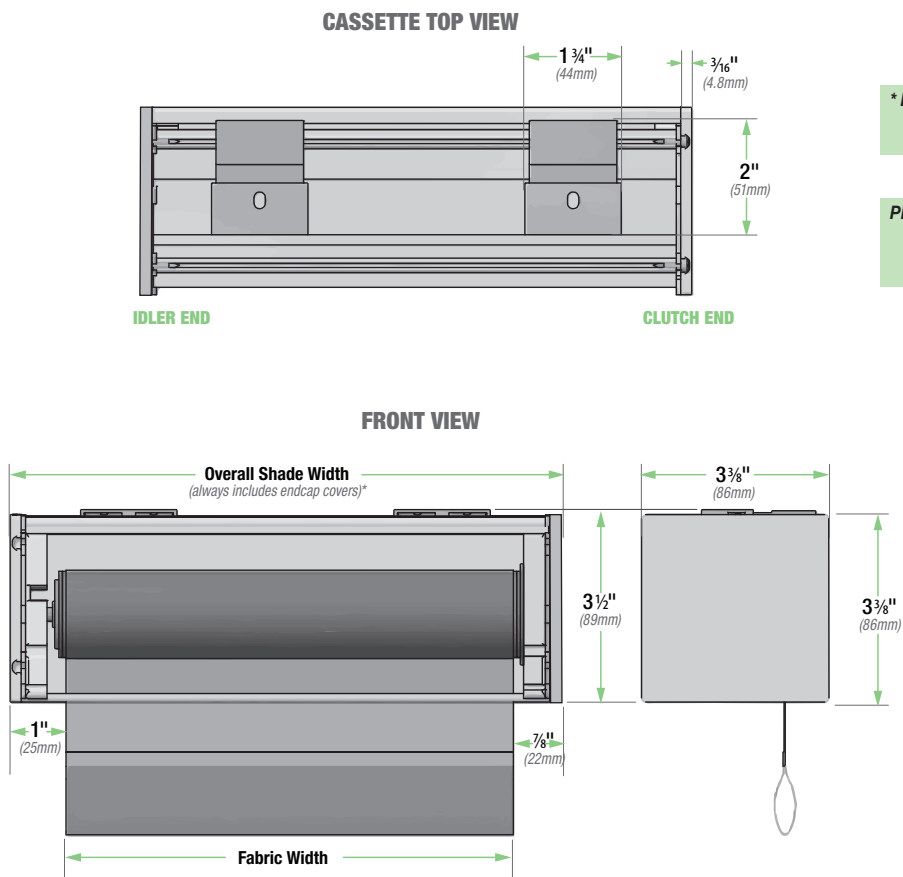
PLEASE NOTE:
When measuring shade height, remember to include endcaps and fascia, or headbox.

Clutch-Operated FlexShade NEXD Components:

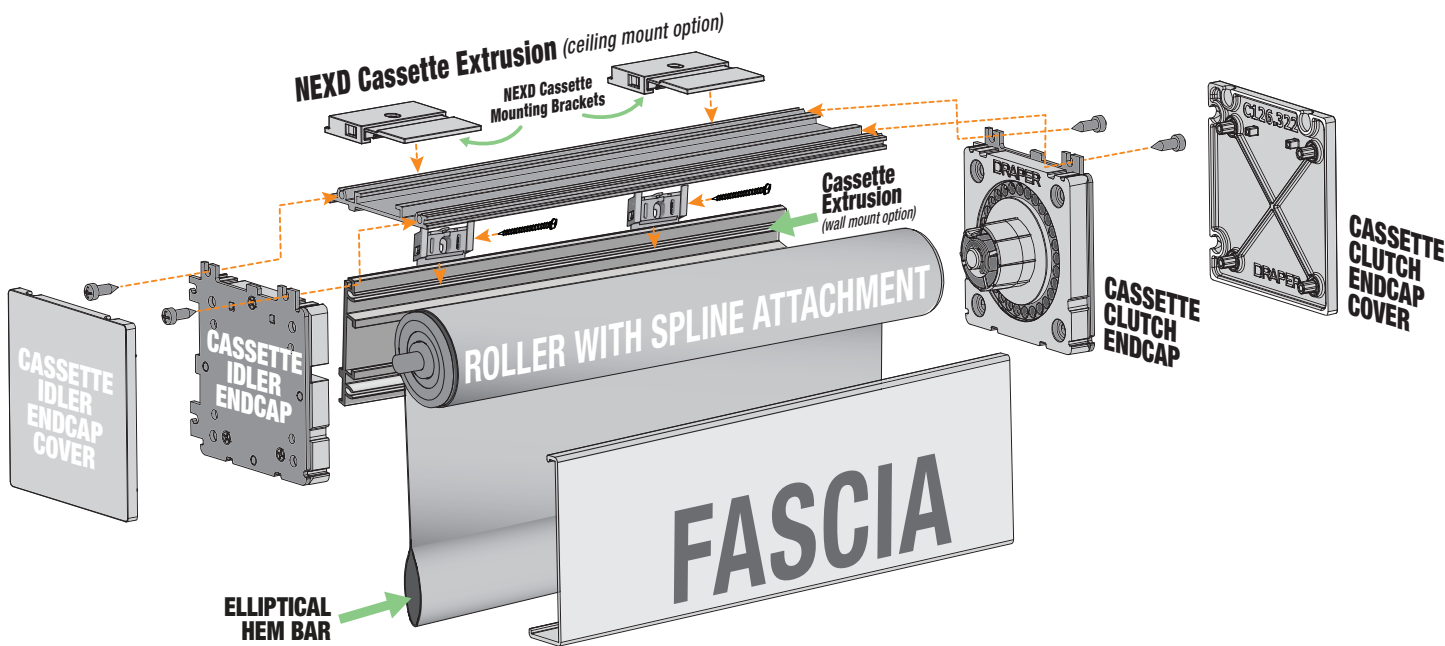


Clutch-Operated FlexShade NEXD

Clutch-Operated FlexShade NEXD Cassette Dimensions:

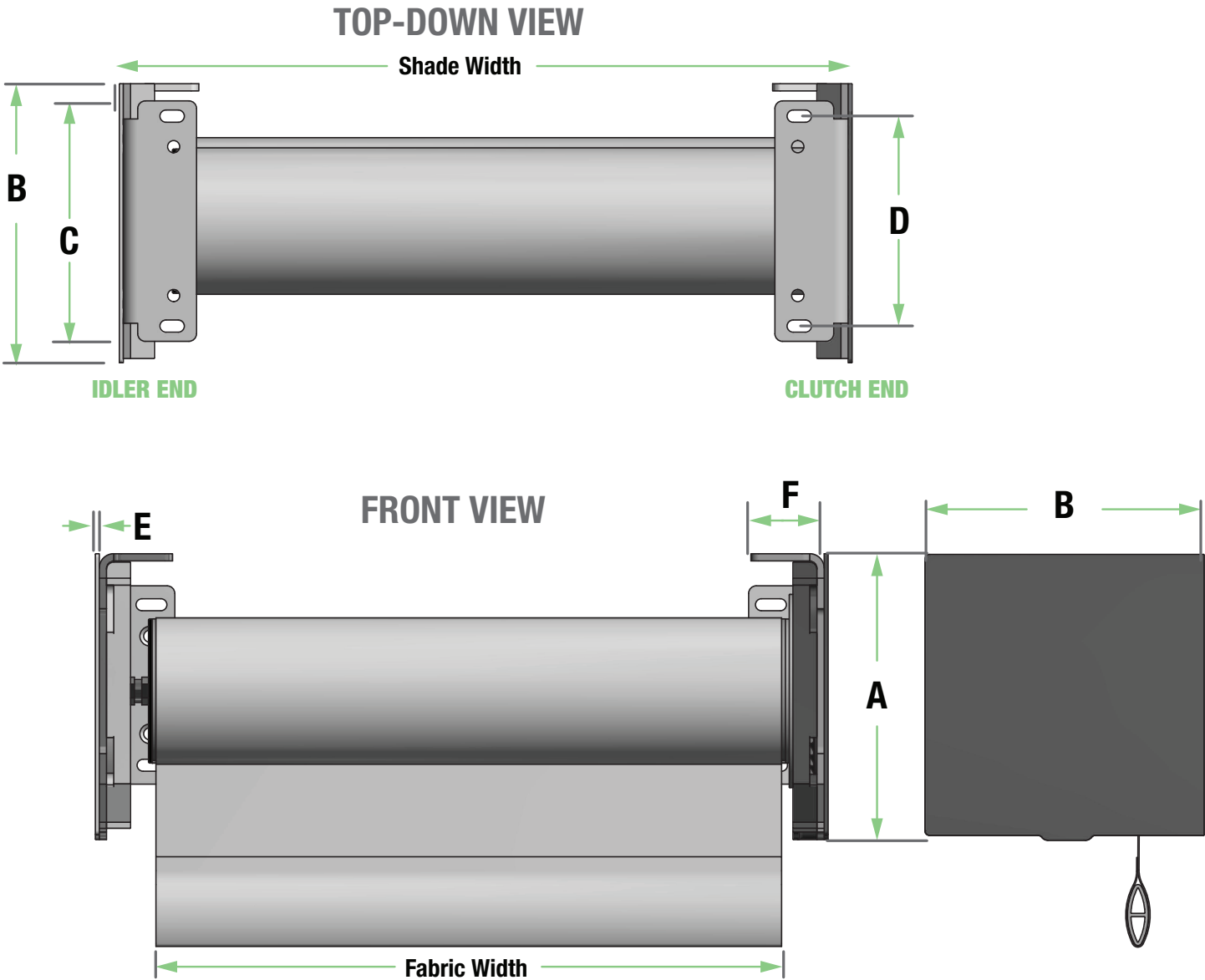


3" (76mm) NEXD Cassette Components



Clutch-Operated FlexShade® NEXD, Small and Large Hardware

Dimensions



	SMALL HARDWARE DIMENSIONS	LARGE HARDWARE DIMENSIONS
A	3 7/8" (98 mm)	4 5/8" (117 mm)
B	3 3/8" (86 mm)	4 5/8" (117 mm)
C	2 3/4" (70 mm)	3 15/16" (100 mm)
D	2 1/8" (54 mm)	3 7/16" (87 mm)
E	1/16" (1.6 mm)	1/16" (1.6 mm)
F	1 1/4" (32 mm)	1 1/4" (32 mm)

Bottom-Up FlexShade® NEXD, Small and Large Hardware

Specifications

EQUIPMENT

NEXD CLUTCH OPERATOR: Delrin® POM thermoplastic with swaged .354" (9 mm) primary steel post with rotational bearing to ensure smooth and quiet operation. Overrunning design. Positive mechanical engagement of drive mechanism to tube. White (standard) or black color options. Stainless steel bead chain (standard). Ivory, grey, black, white, and brown polyester chain available.

ROLLERS: Extruded aluminum 2", 2.36", or 3.12" (51, 60, or 79mm) diameter roller tube as appropriate for shade.

COMPONENTS

ENDCAPS: 1018 steel stamping. two sizes available: **SMALL:** 3 3/8" x 3 3/8" (98 x 84 mm), **LARGE:** 4 3/4" x 4 1/8" (121 x 119 mm). Installs to face, ceiling, or jamb. Field convertible between wall left, wall right, or ceiling mount. Idler endcaps to have leveling adjustment.

ENDCAP COVERS: Plastic covers push into endcaps for positive engagement. Available in ivory, bronze, black, silver, or white to match fascia.

FABRIC ATTACHMENT: Spline fabric attachment (standard) allows removal of fabric panel without removal of roller assembly LSE adhesive fabric attachment available upon request.

FABRIC RETAINER: 1/4" (6 mm) OD .17" (4 mm) ID linear low-density polyethylene tubing, inside heat seamed hem.

HEM BAR: Machine extruded aluminum, finished to match fascia. Clear anodized (standard), black, white, ivory, or bronze powder coat finish available. Includes built-in pulley assemblies for lifting cables.

LIFTING CABLE: 0.046" (1 mm) OD 7"x19" (178 x 483 mm) strand low-stretch, high fatigue nylon-coated cable.

FASCIA: L-shaped cover of 6063-T5 extruded aluminum. Fascia snaps into place using no exposed fasteners. Clear anodized finish (standard) or available in ivory, bronze, black, or white powder coat.

SURFACE HEADBOX: Consists of fascia, "L" shaped back/top cover. Endcaps slide into extrusion without exposed fasteners.

POCKET HEADBOX: For pocket installation, includes a "U" shaped back/top/front cover with removable bottom closure panel.

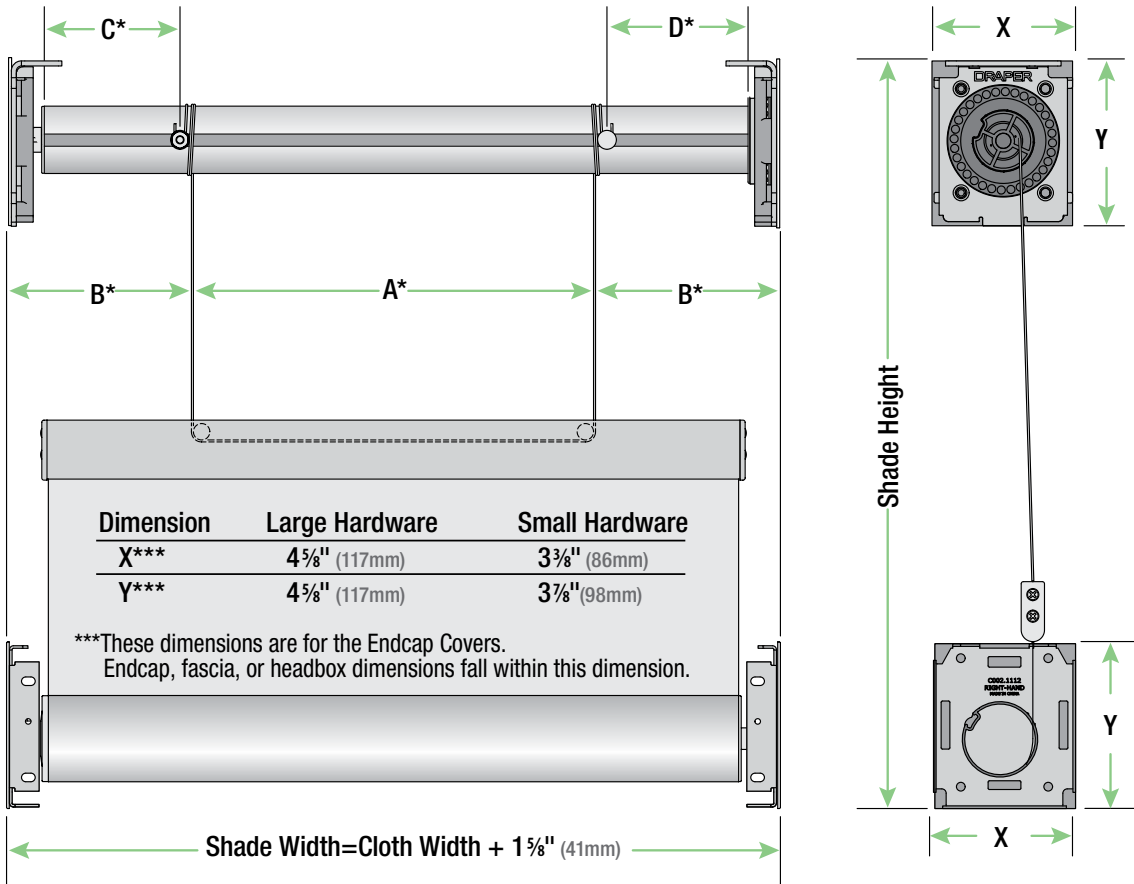
Small Size: 3 3/8" x 3 3/8" (98 x 84 mm)

Large Size: 4 3/4" x 4 1/8" (121 x 119 mm). Some exposed fasteners required.

Please note: Dimensions of rollers, operators, and hardware at manufacturer's discretion.

DOWNLOADABLE 3-PART SPECIFICATIONS: available at www.draperinc.com.

Dimensions



*These dimensions are different for each shade and are provided by Draper with your order.
Dimension "A" is a vertical cable spacing.
Dimension "B" is the distance from the vertical cable spacing to the vertical edge of the shade.
Dimension "C" is the distance from the Idler-End of the tube to the center of the cable attachment stud.
Dimension "D" is the distance from the Operator-End of the tube the center of the cable attachment stud.